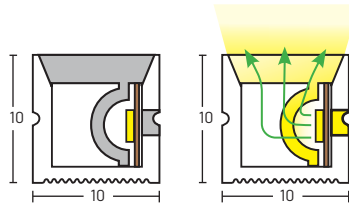
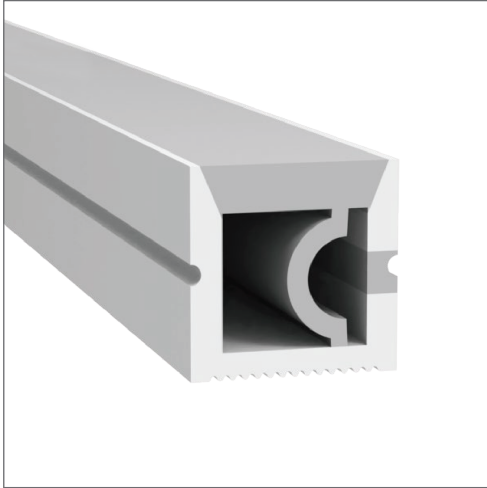


SPECIFICATION SHEET

AUSTRALIA / INTERNATIONAL

168 LEDs/M
 CRI 90 + / 1200~1330 lm/M



ABOUT

- Flexible LED Neon with sideways (left to right) bending profile.
- Various colour temperature and coloured options available.
- IP 67 waterproof and yellow-resistant.
- Cutting intervals of 20 to 25mm, which is the smallest cut interval on the market.
- Made to order to custom lengths.
- Can be paired with our extrusions: AE 1010S. One of our most versatile models, this model is particularly suitable for joinery.

LED Quantity & Rated Power

168 LEDs/M - 9.6W/M

Maximum Length

10M

Size

10mm X 10mm

Input Voltage

24V

Colour Temperature

3000K / 4000K / 5000K

PCB Width

5mm

Beam Angle Selection

120°

Cutting Increment

25mm

Luminous Flux

1200 ~ 1330 lm/M

LED Type

SMD2835

Colour Rendering

Index 90+

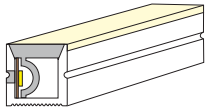
IP Rating

65

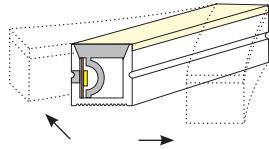
Warranty

2 Years

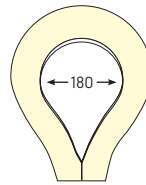
BEND MANUAL



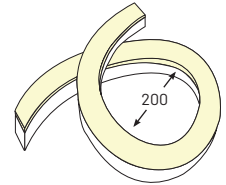
Lighting Profile



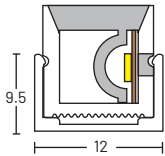
Bending Direction



Bend Radius



Bend Radius



Aluminium Profile



Flexible Aluminium Profile



End Cap
 (With/Without Hole)

Aluminium Clip

PRODUCT ORDER CODE

[E.G. EL1010S - 24V - 3000K - 168LEDs/M 9.6W/M - NON-DIM]

CODE

EL1010S

INPUT VOLT

24V

CCT

3000K

4000K

5000K

LED QUANTITY

168LEDs/M
 9.6W/M

DIMMING

DIM

NON-DIM