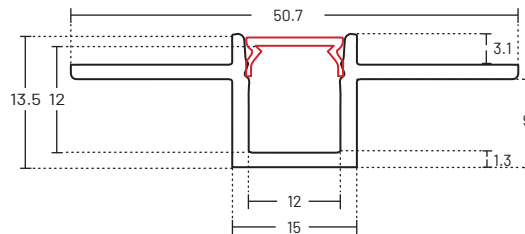
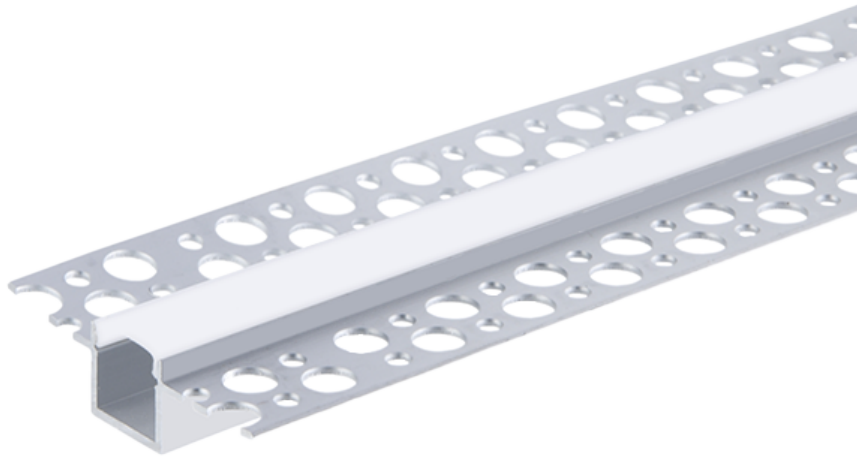


SPECIFICATION SHEET
AUSTRALIA / INTERNATIONAL



ABOUT

- Recessed extrusion for 8-10mm wide LED striplights
- Opal diffuser is included
- Plaster-in Trimless Extrusion for ceiling or wall recessed lighting
- Easy to cut to size
- Supplied as standard 3 metres in length
- Quality aluminium alloy fabrication to ensure heat dissipation

External Size

15 mm x 13.5 mm
50.7 mm x 13.5 mm (With Wings)

Internal Size

12 mm x 12 mm

Diffuser

Opal

Standard Length

3 meters

Includes

Extrusion

Material

Aluminium